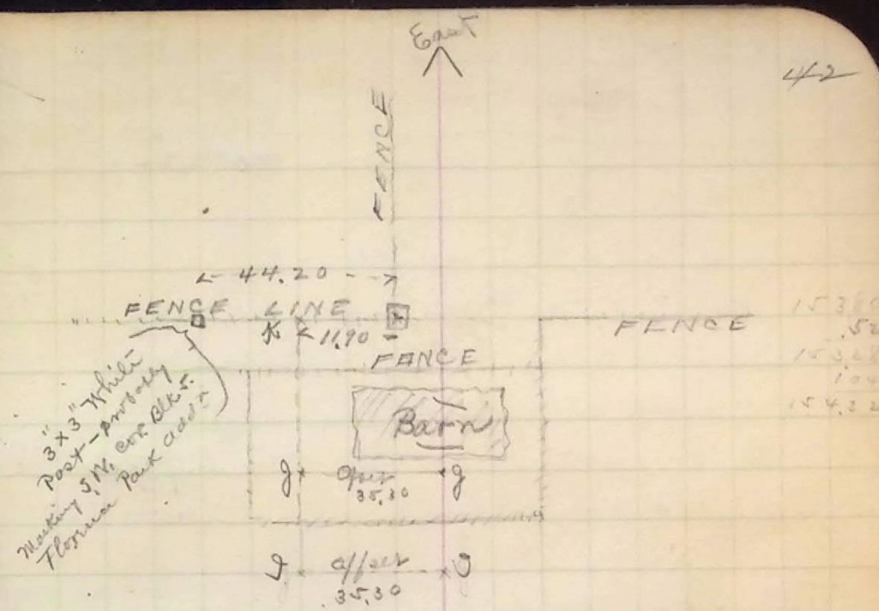


Survey to determine length of
S. line S. 1/4 Sec 33-

From 10' Mt of Monument "B"
Cut 32° & 33° - from Right
and E. from foresights on Oyster
Run bridge as follows
89°50' 179.41 269.33 859.21
to foresights assumed on
Mountain - Average bearing
89°50.4

Other measure from Monument East as follows

Measure	Slope	Temp	Cut	Correction	Correct Dist
a 200	+ 2°30'	92	100	$\frac{-1401}{10000} = -0.1401$	199.833
b 600	+ 0°00'	101	-	$\frac{-1010}{10000} = -0.1010$	600.135
c 600	+ 0°40'	98	-	$\frac{-1042}{10000} = -0.1042$	600.081
d 200	- 0°36'	98	80	$\frac{-1011}{10000} = -0.1011$	200.014
e 200	+ 0°15'	98	-	$\frac{-1047}{10000} = -0.1047$	200.039
f 200	+ 1°30'	104	-	$\frac{-1067}{10000} = -0.1067$	199.982
g 200	+ 2°30'	104	200	$\frac{-1072}{10000} = -0.1072$	199.605
h 200	14°16'	96	200	$\frac{-1118}{10000} = -0.1118$	243.808
i 200	0°50'	98	-	$\frac{-1085}{10000} = -0.1085$	954.430
K	154.32	0 00	98	-	
	3404.32				
				-6.772	3397.927
				-3.379	3394.548
				-6.393	3398.15



Washington Monument
ave

from this 800 foot point I measure 16.0 and
Set 1x1 1/2 post under wire fence line
to hold measure & line
Cross Mon Canal at 15+25

3398.15 =
Correct distance from center of Washing
ton Ave to 1/4 cor - S. side of Sec 33